

Lake Sabrina to Donkey Lake

By the Parchers Resort Crew

Sabrina Basin
(7 Miles Roundtrip and 1600 Vertical Ft.)

From the Sabrina Basin trailhead, follow the trail around the south shore of Lake Sabrina. Take notice of the wildflowers and spectacular view of the Sierra crest. As the trail reaches the back of the lake, it ascends up a large draw. The lower portions of the trail are exposed to the sun so this is a good early morning hike. Take note of the waterfall above the back of Lake Sabrina.

Once the trail moves south, into the draw, the switchbacks begin. The trail from this point, all the way to Blue Lake consists of short sections of straight trail sandwiched between repetitive series of switchbacks. Much of these switchbacks are forested but those that are not provide an excellent vista looking back toward Lake Sabrina.

While this is a good uphill hump, the view is what will take your breath away. The scenery is spectacular. The trail winds up into the forest and flattens out as the trail approaches the lake.

Blue Lake is located at about 10,400 ft. and is very scenic. Follow the trail until you come to a granite overlook. The trail doubles back, away from the lake but still follows the lake contour. As the trail nears the middle of Blue Lake, the trail forks. Stay to the left.

The scenery along the creek above Blue Lake is spectacular. It is a gentle and scenic hike up to Donkey Lake. The lake is small and full of small brook trout. When ready, retrace your steps to Sabrina Trailhead.

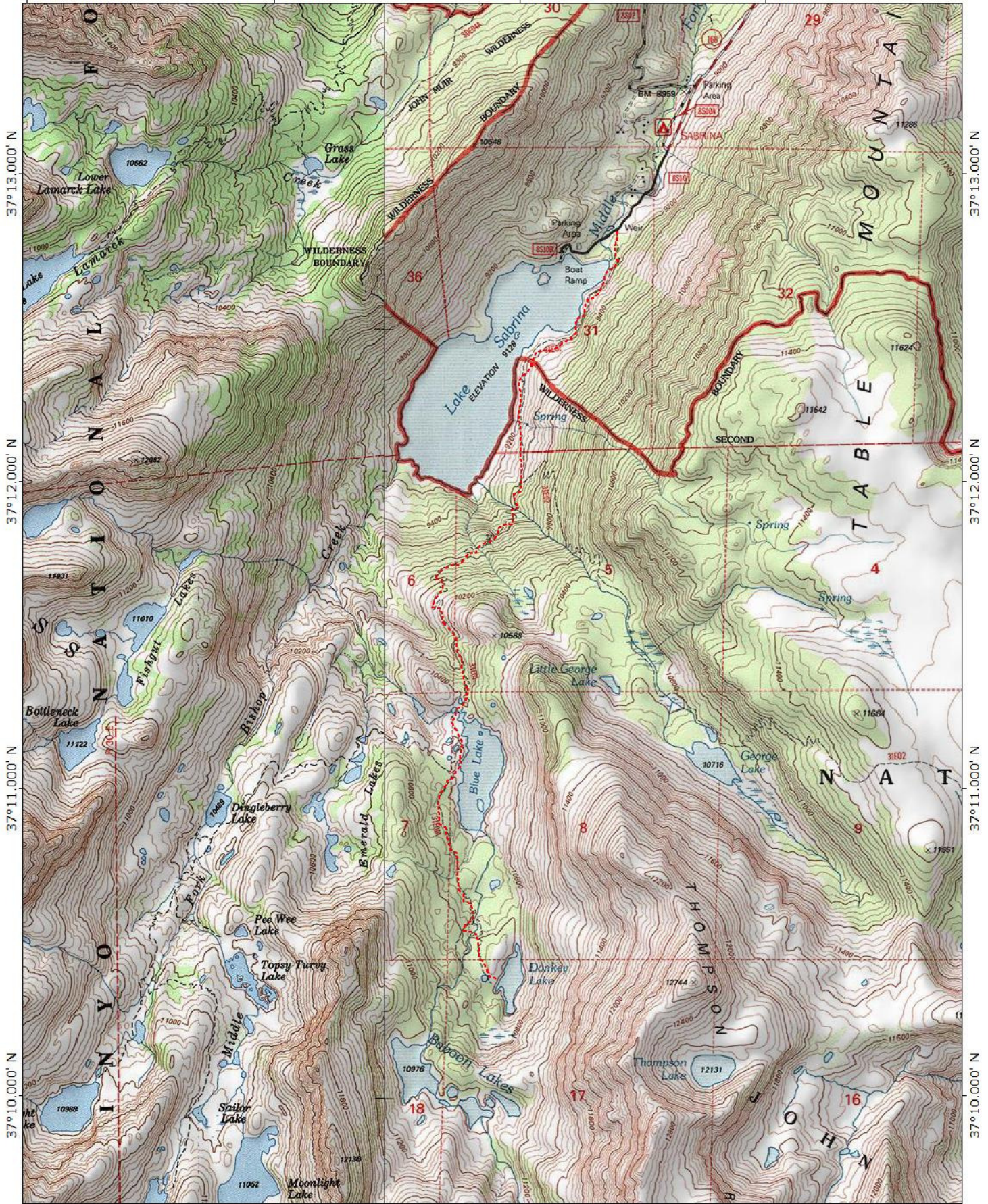


118°39.000' W

118°38.000' W

118°37.000' W

WGS84 118°36.000' W



118°39.000' W

118°38.000' W

118°37.000' W

WGS84 118°36.000' W

