

# South Lake to Spearhead Lake Hike

**By the Parchers Resort Crew**

Bishop Pass Trailhead at South Lake  
(6 Miles Roundtrip and 1100 Vertical Ft.)

Catch the trail as it leaves the lower end of the South Lake parking lot. There are some nice wildflowers during the first 100 yards of trail. The trail ascends into the open, following above the shoreline. There are some spectacular views of the Sierra Crest and South Lake Island to had in this stretch.

The trail then moves into a draw before making a hairpin turn back toward the lake. At this point, the trail enters the John Muir Wilderness. There is a long straight stretch of trail through the forest before coming to the Treasure Lakes Trail Junction.

At the junction, take the trail to the left, marked Bishop Pass. Follow the path onto a wooded bench that slowly ascends as it moves southeast. Continue to follow the trail as it makes some gentle switchbacks, then straightening out again. The trail steepens as it make a hairpin turn that will soon provide a view down on Hurd Lake.

The trail moves straight across a rocky outcropping before making about a half dozen steeper switchbacks. The trail straightens out moving up a shallow draw, crosses to the other side and then finally comes to a cove of Long Lake. The trail works its way back to the lake and follows the shoreline to the lake inlet. The trail then ascends above and in back of Long Lake.

In a few hundred yards, Spearhead Lake comes into view. The shape of the lake gives it the distinctive name. it is easiest to work down the lake near the outlet. This is also the best place to cross the creek when the water is low. When the water is high, the best cross is down the creek, just above Long Lake.

Spearhead Lake is a small body of water but it does hold some large fish. There are rainbow, brook, and brown trout to be had in Spearhead Lake. In late June to early July, there are large numbers of spawning rainbow trout in the flats at the outlet of the lake.



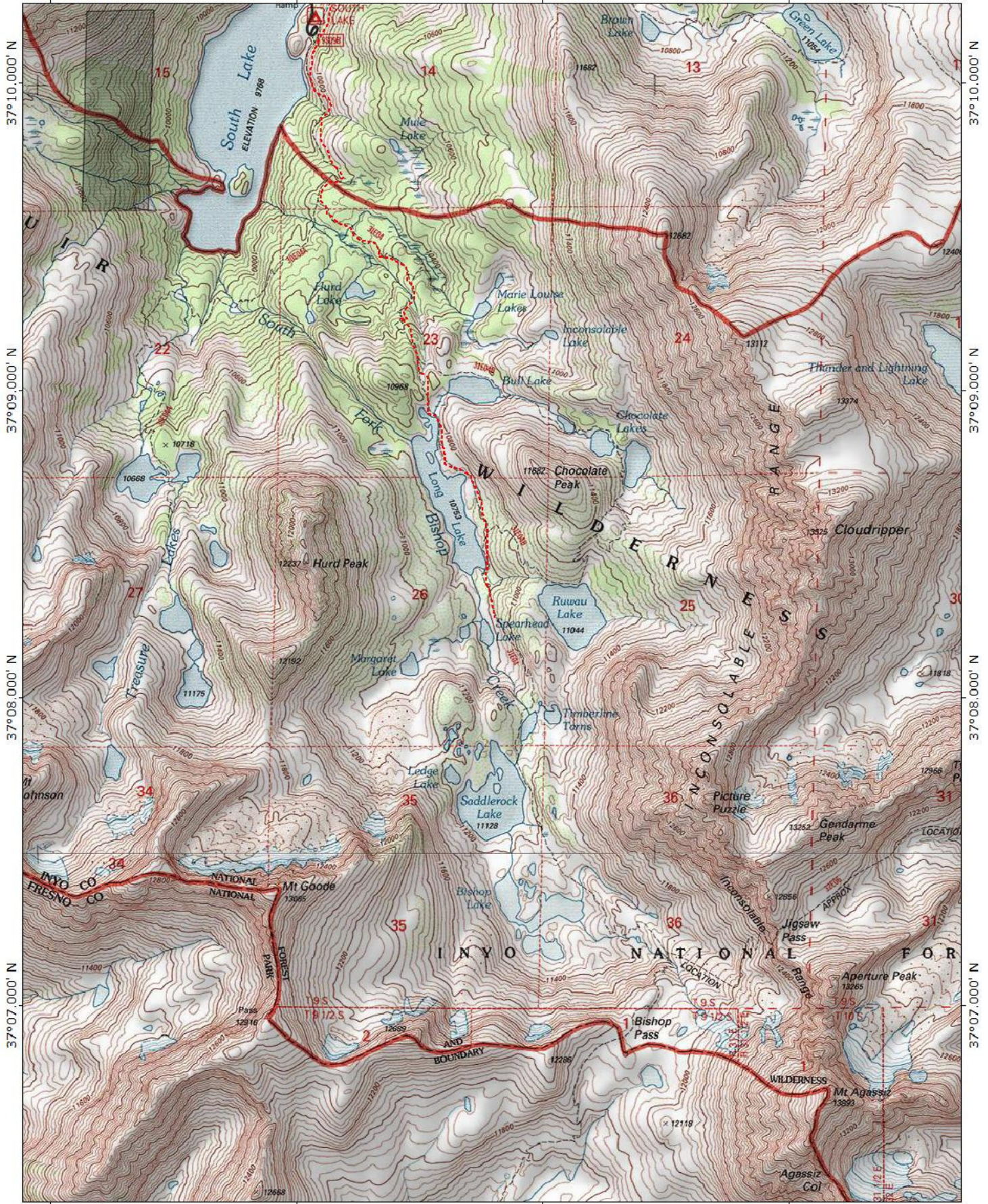


118°35.000' W

118°34.000' W

118°33.000' W

WGS84 118°32.000' W



118°35.000' W

118°34.000' W

118°33.000' W

WGS84 118°32.000' W

TN MN  
14°