

Parchers Resort to Green Lake (Pipeline)

By the Parchers Resort Crew

South Lake to Green Lake
(4.8 Miles Roundtrip and 1150 Ft. Vertical)

This hike starts in the upper end of the main parking lot at South Lake. Enter the trail at the gate. Hike down the trail about 100 yards, looking to the right to spot the pipeline. Walk to the pipeline, climb aboard and start following it up the canyon wall.

The pipeline is easy to walk most of the way and it provides footing adjacent to it much of its length. There are some stretches that require walking on the pipeline itself, but it is not scary and requires only minimum balance skills. After about $\frac{3}{4}$ of a mile the pipe joins the switchbacks of the Green Lake Trail.

As you ascend up the canyon wall, the forest thins and views down canyon become visible. There is an excellent view of Parchers Resort at the point where the trail meets the old pipeline.

As you continue up the switchbacks, the trail levels out and moves into a large and relatively flat meadow. There are many different types of wildflowers to be viewed in this section of the trail. Continue to follow the trail until it reaches Brown Lake.

Follow the trail up-canyon from Brown Lake until it ascends into a grove of stunted trees, taking the hiker through another stretch of switchbacks. The trail flattens out as Green Lake comes into view. There are multiple nice campsites to lounge or you can try your angling skill on the large rainbow trout that inhabit Green Lake.

Green Lake Diversion pipe.



View down on Parchers from the pipeline

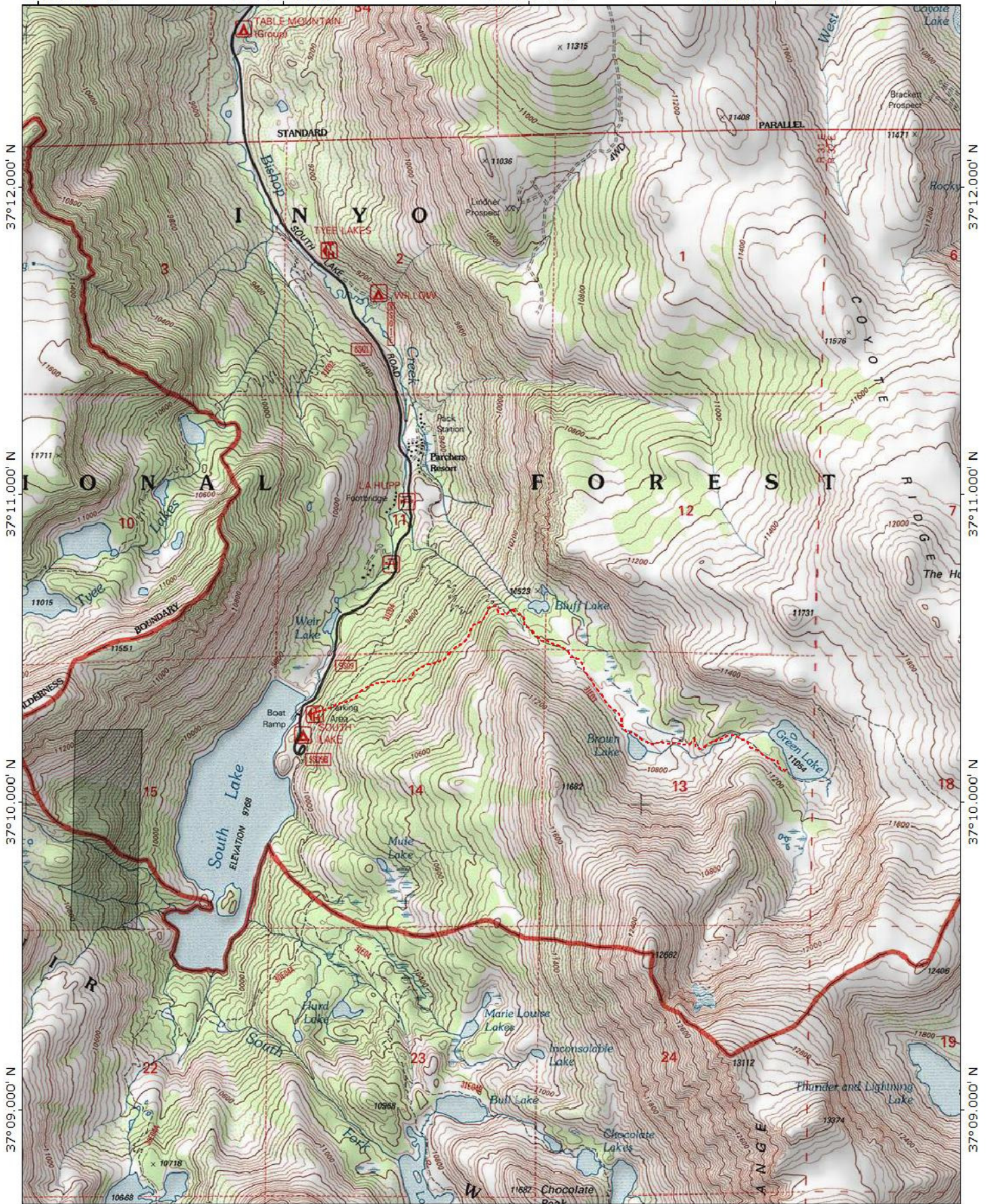


118°35.000' W

118°34.000' W

118°33.000' W

WGS84 118°32.000' W



37°12.000' N

37°11.000' N

37°10.000' N

37°09.000' N

37°12.000' N

37°11.000' N

37°10.000' N

37°09.000' N

118°35.000' W

118°34.000' W

118°33.000' W

WGS84 118°32.000' W

